

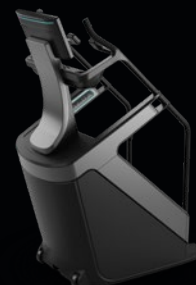
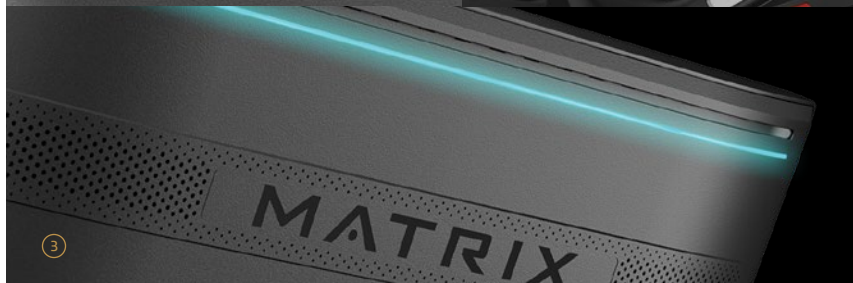
MATRIX



ONYX CLIMBMILL

Showcase the elevation of exercise in **your facility** with a Climbmill that makes a statement of style and takes the workout experience to new heights in every sense. The artistry and craftsmanship of the Onyx Climbmill combines immersive technology, seamlessly smooth surfaces, elegant angles, rippling textures, and the vibrant glow of sophistication to make an incomparable impression on everyone who experiences it.

- ① Interactive Touch Controls
- ② Immersive, 56 cm / 22" Touchscreen Display
- ③ Full-spectrum Ambient Lighting



ONYX CLIMBMILL

C-ONYX-XL

CONSOLE

Display	56 cm / 22" class capacitive touchscreen LCD
Languages	English, German, French, Italian, Spanish, Dutch, Portuguese, Chinese-S, Chinese-T, Japanese, Korean, Swedish, Finnish, Russian, Arabic, Turkish, Polish, Welsh, Basque, Vietnamese, Somali, Danish, Thai, Malay, Catalan
Analog TV	NTSC, PAL, SECAM
Digital TV	ATSC 1.0, QAM-B, ISDB-T, ISDB-Tb, DVB-C/S/S2/T/T2
IPTV	Content: MPEG2/H262, AVC/H264 / Protocols: UDP, RTSP, HTTP, HTTPS
Pro:Idiom Compatibility	Optional; IPTV and coax
WiFi	Yes
Bluetooth	Yes; headphones, heart rate, FTMS
ANT+	Yes; heart rate
RFID Wireless Login	Yes
Connects to Apple Watch	Yes
Connects to Samsung Galaxy Watch	Yes
Made for iPhone, iPad	Yes
USB Port	Yes; device charging, device media, software updates
Wireless Charging (Qi)	Yes

FRAME

Drive System	Clutched ECB with motorcycle-grade, sealed drive chain and belt
Step Dimensions	25.4 x 46 x 20.3 cm / 10" x 18" x 8"
Handlebar Design	Sculpted, drive-position handlebars with integrated forearm rests
Auto-stop Function	Yes; frame mounted IR
Control Zone	Yes
Locking Staircase	Yes
Top-down Levelers	Yes
Contact & Telemetric HR	Yes
Step-on Height	26.67 cm / 10.5"
Service Caster	Yes
Minimum User Weight	45 kg / 99 lbs.
Maximum User Weight	182 kg / 400 lbs.
Ethernet Connectivity	Yes
Assembled Dimensions	164 x 82.4 x 212.5 cm / 64.5" x 32.5" x 83.6"
Power Requirements	100-240 V — 50/60Hz AC